

Profoto

Profoto C1 and C1 Plus Review

Mister Zeus



Table Of Contents

Introduction	3
What's the difference between C1 and C1 Plus?	8
Video tutorials for smartphone photography	10
Create professional images with your smartphone	10
How to create a professional outdoor portrait	11
How to create a great selfie	12
How to create a professional indoor portrait	13
How to create delicious food photography	14
How to get started	15
Accessories	16
Profoto Clic Creative Gel Kit	16
Profoto Clic Grid & Gel Kit	16
Profoto Clic Dome	17
The Profoto Camera App	18
Profoto Lights system	32
Profoto C1 The light that changes everything	32

Profoto C1 Plus The light that changes everything	32
Profoto B10 & B10 Plus Big lights in small packages	34
Profoto Connect The button-free trigger	34
System requirements for Profoto Camera app	36
Sample Images	37
Conclusion	59
FAQs – Profoto C1 & C1 Plus	61
Profoto Clic FAQs	68
Using Profoto C1 and C1 Plus with Huawei phones	69
FAQs – Profoto Camera app	71

Introduction

The Profoto C1 and C1 Plus is a light shaping system for smartphones. The world is increasingly connected, and everyone has a smartphone with them, and as an old saying goes – the best camera is the one you have with you. Initially the focus is on iPhone photographers, with Android support planned.

A smartphone is small, compact, and light, and increasingly powerful, connected and smart. In the context of photography, some weak points include a small sensor size and fixed lenses. There are some workarounds though, and as there is a demand for such extensions, specialist manufacturers are producing accessories to assist creative uses of the smartphones.

Hardware extensions include stabilization systems such as gimbals, grips, phone cages, triggers, or microphones, lenses, and lighting. Software extensions include specialized software apps that provide more features, control, and great results for photo and video.

I was positively surprised by the results of using the C1 with an iPhone 11. There are different use cases by different people of course. My aim was to test it for portraits and wedding photography with a small, light, and portable equipment pack in mind. You can read more about a studio test setup and see plenty of example photos in the samples section.

Photographers using a D-SLR or CSC also supplement their scenes with light, which could be continuous light, or flash light. Until recently, such options did not exist for iPhone photographers. Video lights are available, but these are continuous lights, and may not always generate the image envisioned. Continuous lights also generate more heat and are often less comfortable for your subjects (if taking portraits for example).

Profoto has created a lighting system called the C1 and C1 Plus to help photographers with such challenges. Both C1 models can be used as continuous light sources (model light), or as flash units. You can fire the flash from your connected iPhone, which will also take the photo (using Profoto camera app). You can also fire the flash from the C1 device itself, and take the picture (requires Profoto camera app and connection to your iPhone).

The C1 Plus is the more professional model, which has more power (for continuous lighting and flash lighting), includes embedded Profoto Air receiver, has a tripod mount, and supports further accessories (e.g. light difuser, color gels). Photographers could also use a wireless trigger on a system camera from Sony, Nikon, or Canon, for example, to fire the C1 Plus flash(es). It is a pity that a tripod mount is not available on both models, as that is important for studio and other setup, especially as competing cheap continuous light accessories have such a mount.

Settings of the C1 system are controlled via the Profoto camera app on the smartphone. It is now also possible to control and trigger enhanced flash/lighting models from Profoto (e.g. B10 and B10 Plus, or A10) from the Profoto camera app.

You can connect three C1 systems together, and even mix and match the different models, e.g. use one C1 and two C1 Plus models. When using the C1 Plus model, you can combine that with other Profoto systems, such as the B10 or B10 Plus (great, portable light systems with vast support of lighting accessories), and also the new A10.

The C1/Plus comes in a small box and includes a charging cable (Micro-USB). I use the box as a protective case for transport.

Watch Brandon Woelfel get inspired by the C1 Plus in New York.





The Profoto C1 and C1 Plus, is their first studio lights for smartphones. Connect them to the Profoto Camera and you are ready to start creating professional images with just a simple click.

The light the C1 product range delivers is natural looking with a soft, gentle fall-off, and that's partly because of the shape. Each light is round, like the sun. Possibly Profoto applying experience from the A1X here also.

The Profoto C1 and C1 Plus are very easy to use, and portable, allowing you to be creative with light and shadows.



What's the difference between C1 and C1 Plus?

The C1 and C1 Plus are siblings and the similarities are many: They both enable you to create professional images easily, they deliver beautiful and natural-looking light on the go, anytime, anywhere. And they give you limitless possibilities to play with light and be creative. The main thing that sets them apart is that the C1 Plus has a little more of everything.



Profoto C1

- 1600 lumens of power output – 4 warm and 3 cold LEDs
- Built-in dome diffuser
- Sadly no tripod mount



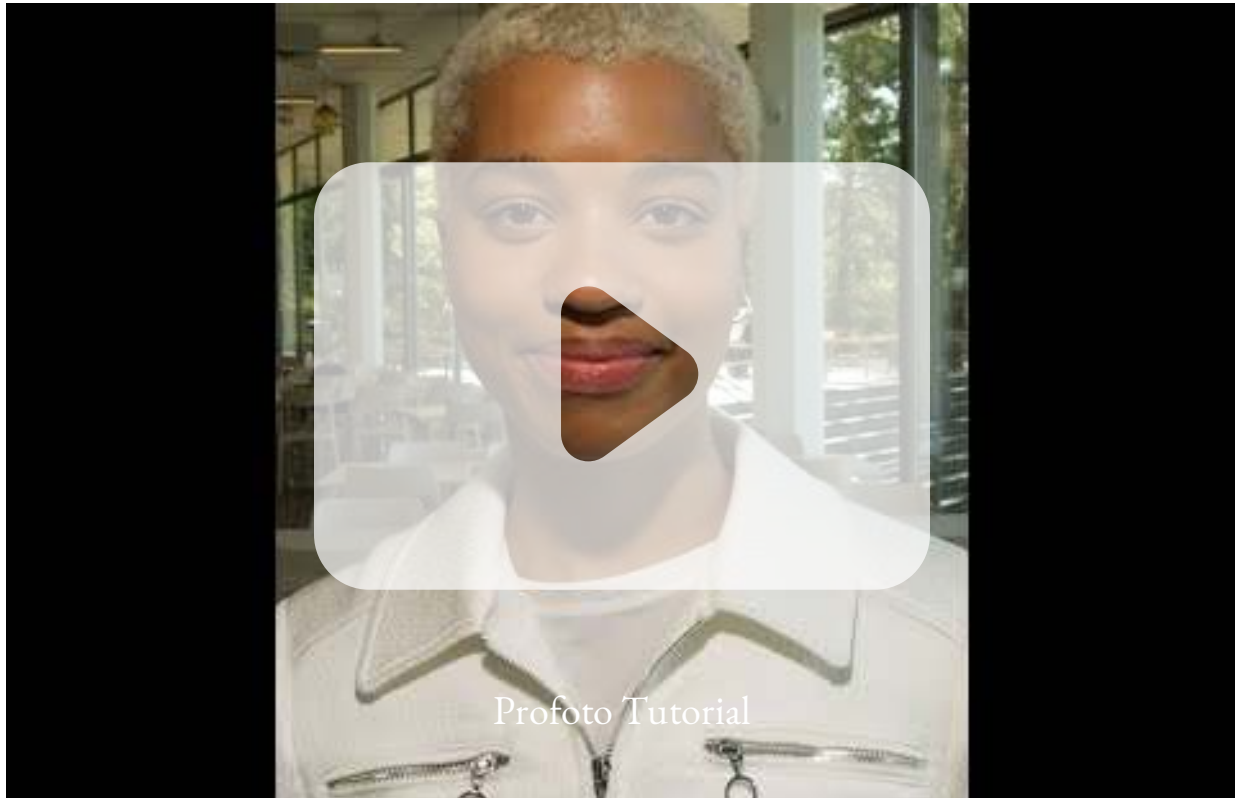
Profoto C1 Plus

- **4300** lumens of power output – 10 warm and 10 cold LEDs
- **Click-on magnetic mount for Clic light shaping tools**
- Built-in button for switching continuous light on/off
- Built-in buttons to adjust power and color temperature
- Built-in thread mount for stands and arms
- Compatible with any Profoto AirTTL Remote

Video tutorials for smartphone photography

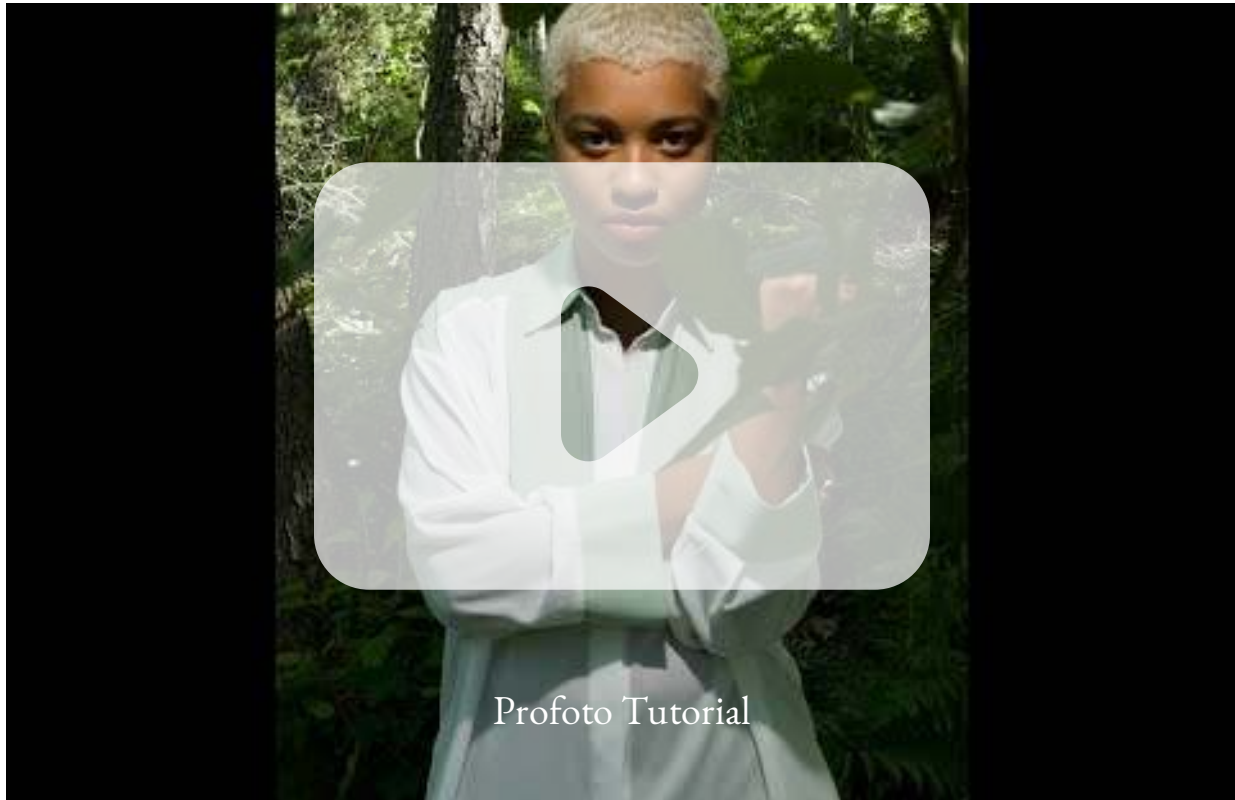
The C1 and C1 Plus and the Profoto Camera are very easy to use. Profoto has a few tutorials to maybe give a little inspiration and show what is possible.

Create professional images with your smartphone



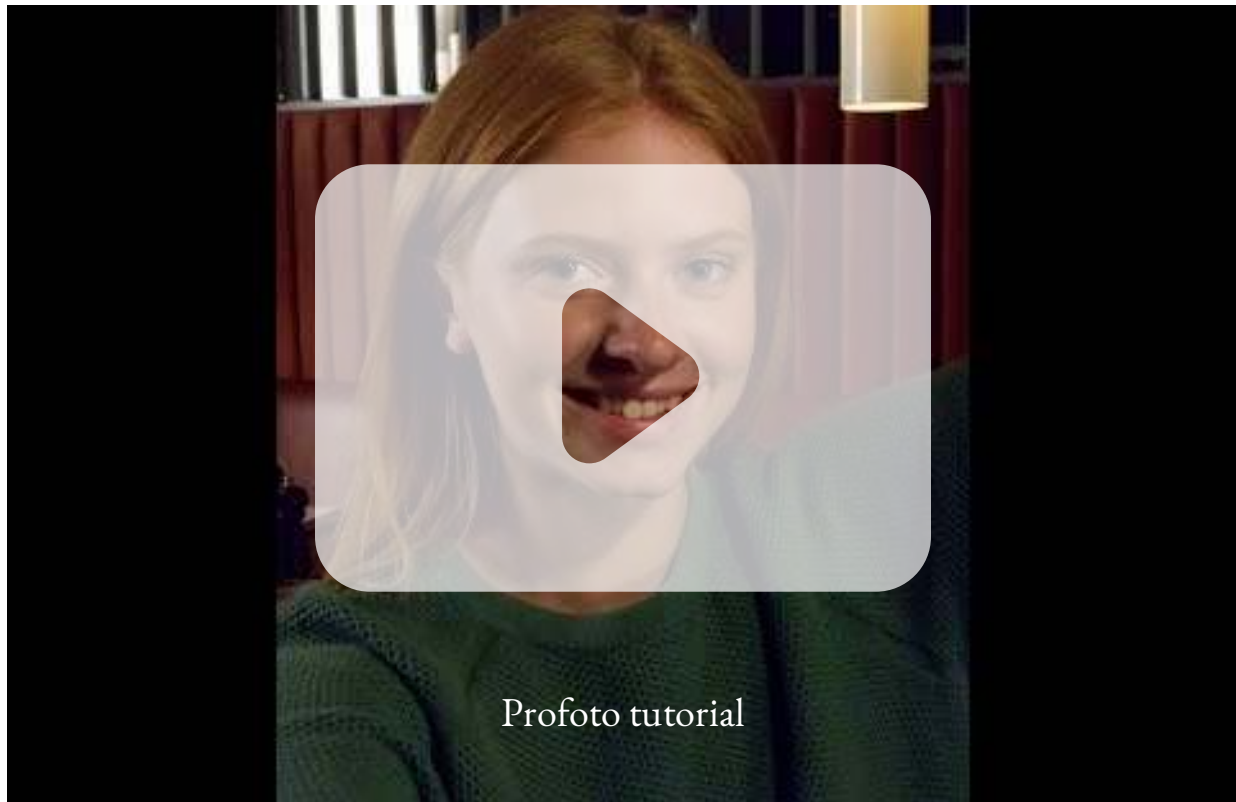
Light is the key to more professional-looking images and here you'll discover six hacks to create beautiful light.

How to create a professional outdoor portrait



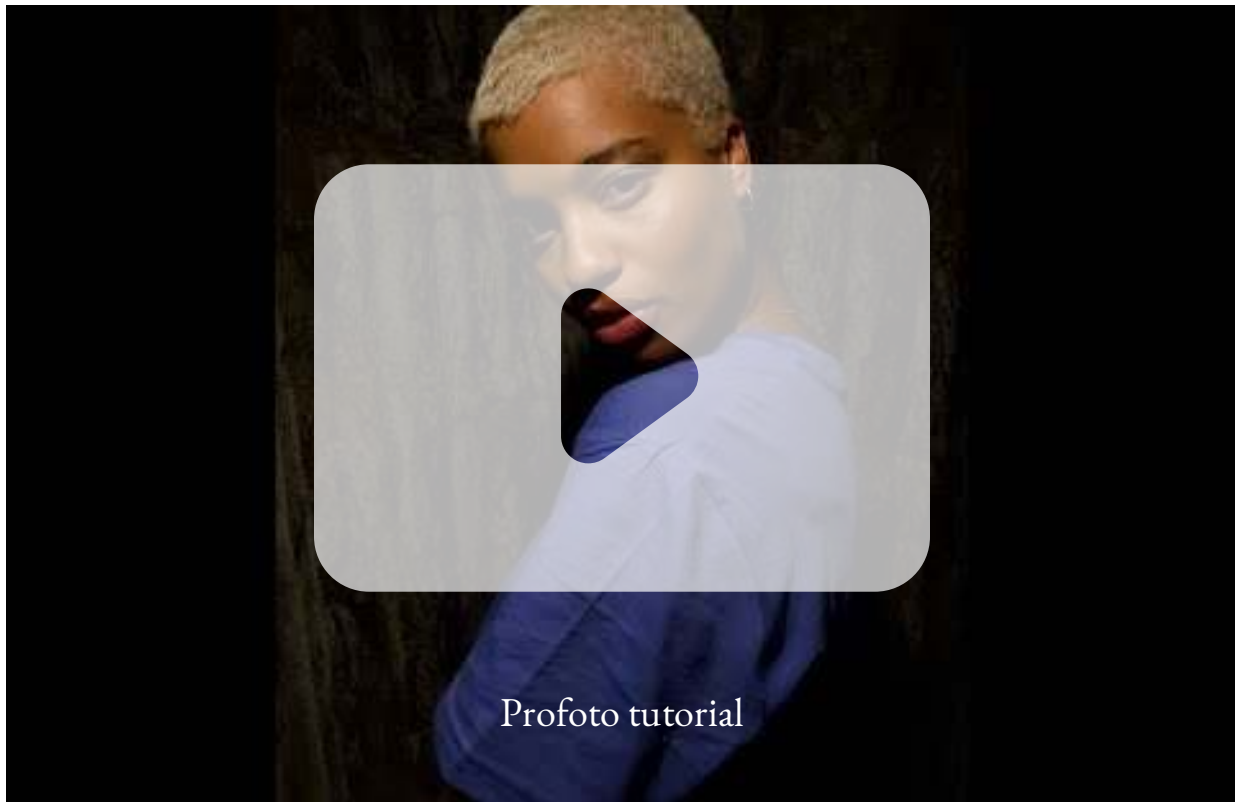
The sun is unpredictable, but here you'll discover the secret to shooting portraits anytime, anywhere with the C1 and C1 Plus.

How to create a great selfie



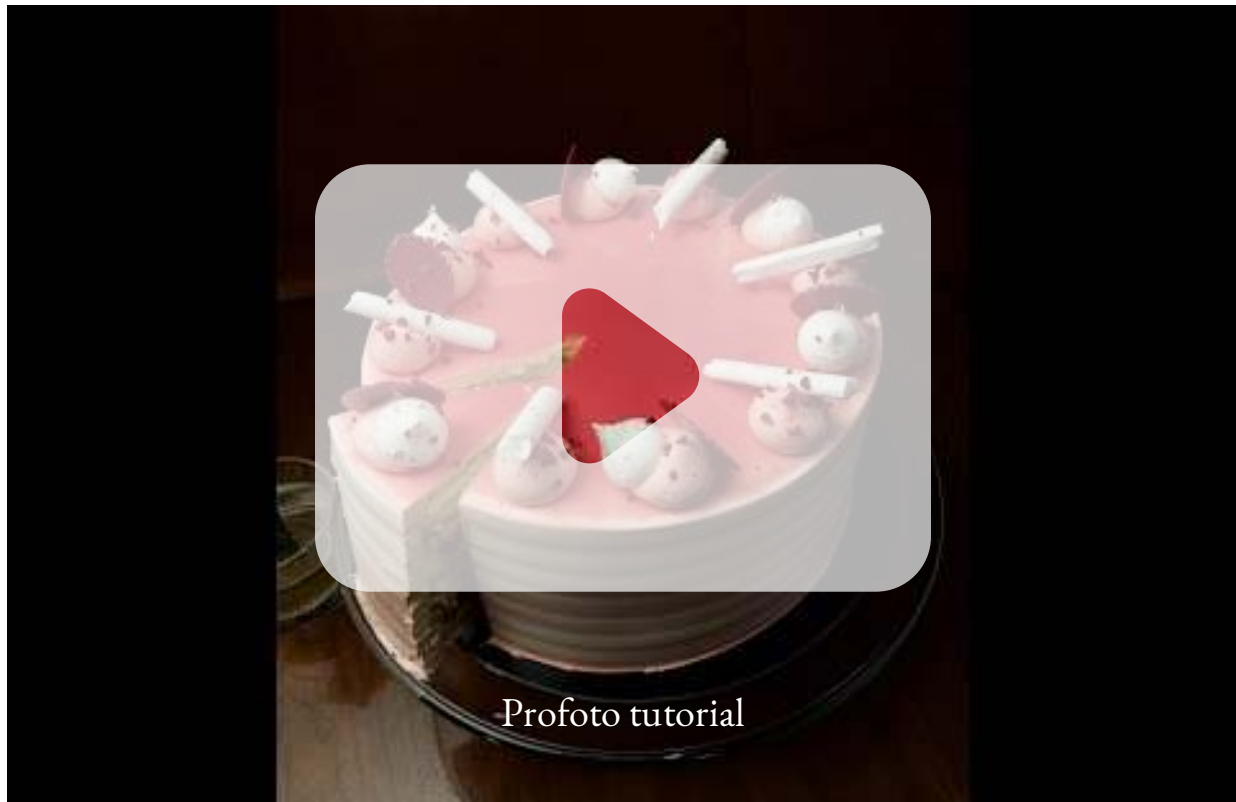
Kiss goodbye to the boring flat images with these tips that demonstrate how light and direction can add sizzle to the selfie.

How to create a professional indoor portrait



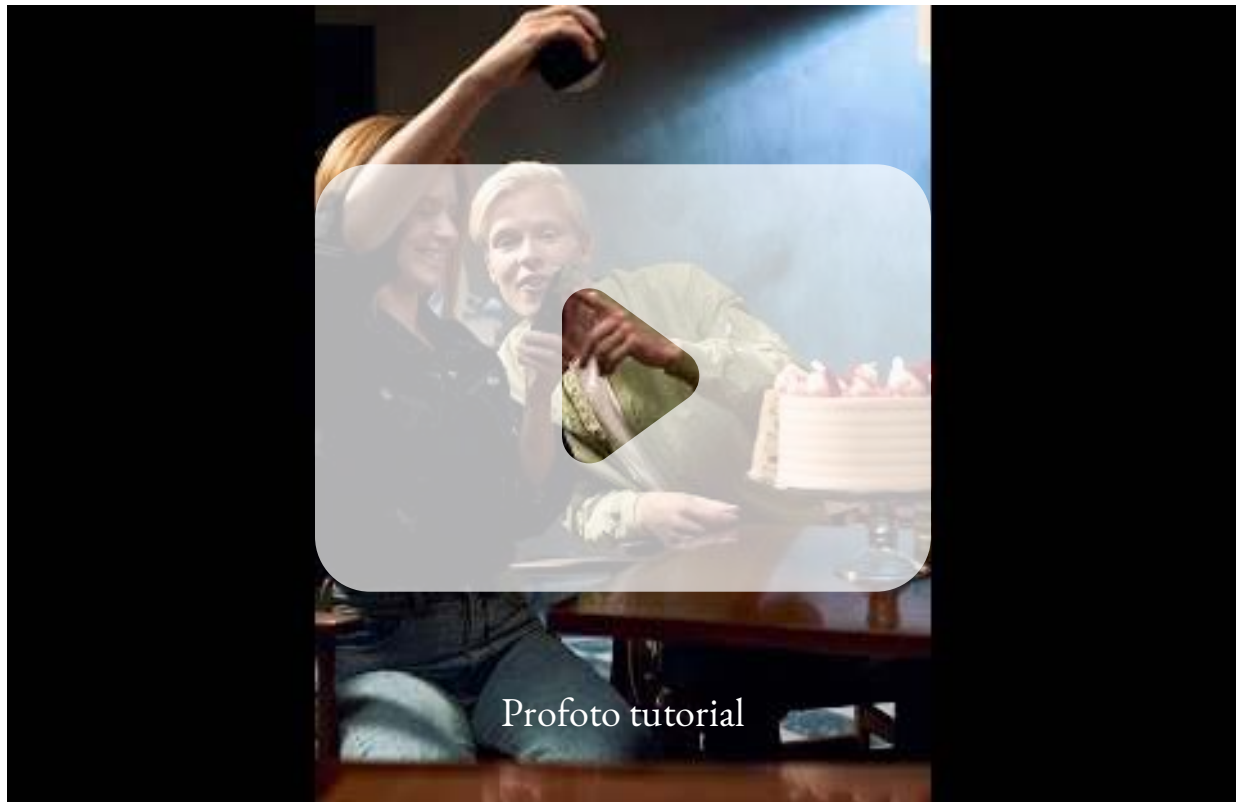
Light can create mood and drama, and with the C1 and C1 Plus you can too by following these easy tips.

How to create delicious food photography



Just six straightforward steps will show you how light will have food looking as good as it tastes.

How to get started



It's all incredibly easy and intuitive, but we thought we'd show you anyway.

Accessories



Profoto Clic Creative Gel Kit

Play with colors



Profoto Clic Grid & Gel Kit

Creates a more direct and circular shape of light and color correction on the go



Profoto Clic Dome

Diffuses the light for a soft and crisp light. [View all accessories](#)



The Profoto Camera App

Profoto developed the Profoto Camera app for ambitious image creators who want to create amazing images irrespective of which type of camera they use. It is a professional smartphone camera for Profoto's studio lights, which enables you to create professional images with just a simple click.

If you shoot with a DSLR or mirrorless camera, the remote control function lets you view and change any setting on your connected Profoto device with a swipe. And when a new firmware is available, you can easily update your device directly from the app.

- **Compatible with**

Profoto C1

- **Compatible with**

Profoto C1 Plus

- **Compatible with**

Profoto B10 and B10 Plus

- **Compatible with**

Profoto Connect

[← Search](#)



Profoto

Professional smartphone camera

Purchase



4.5 ★★★★★

48 Ratings

4+

Age

What's New

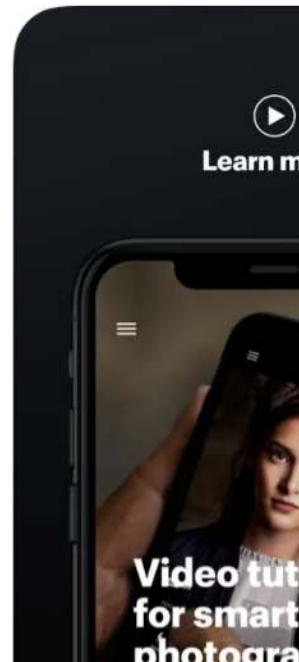
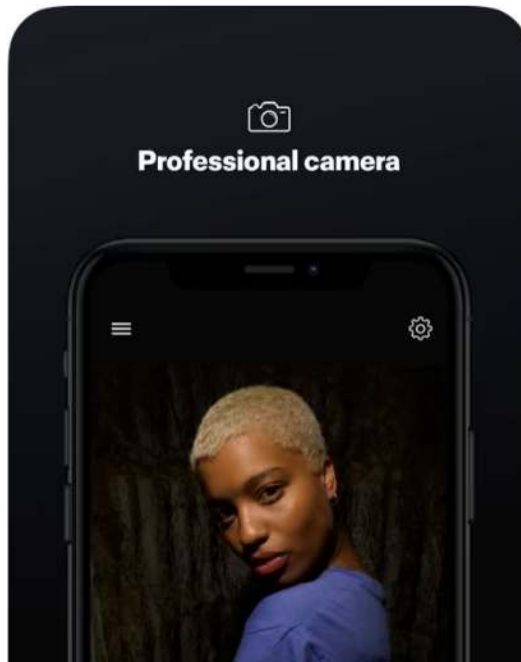
[Version History](#)

Version 2.3.0

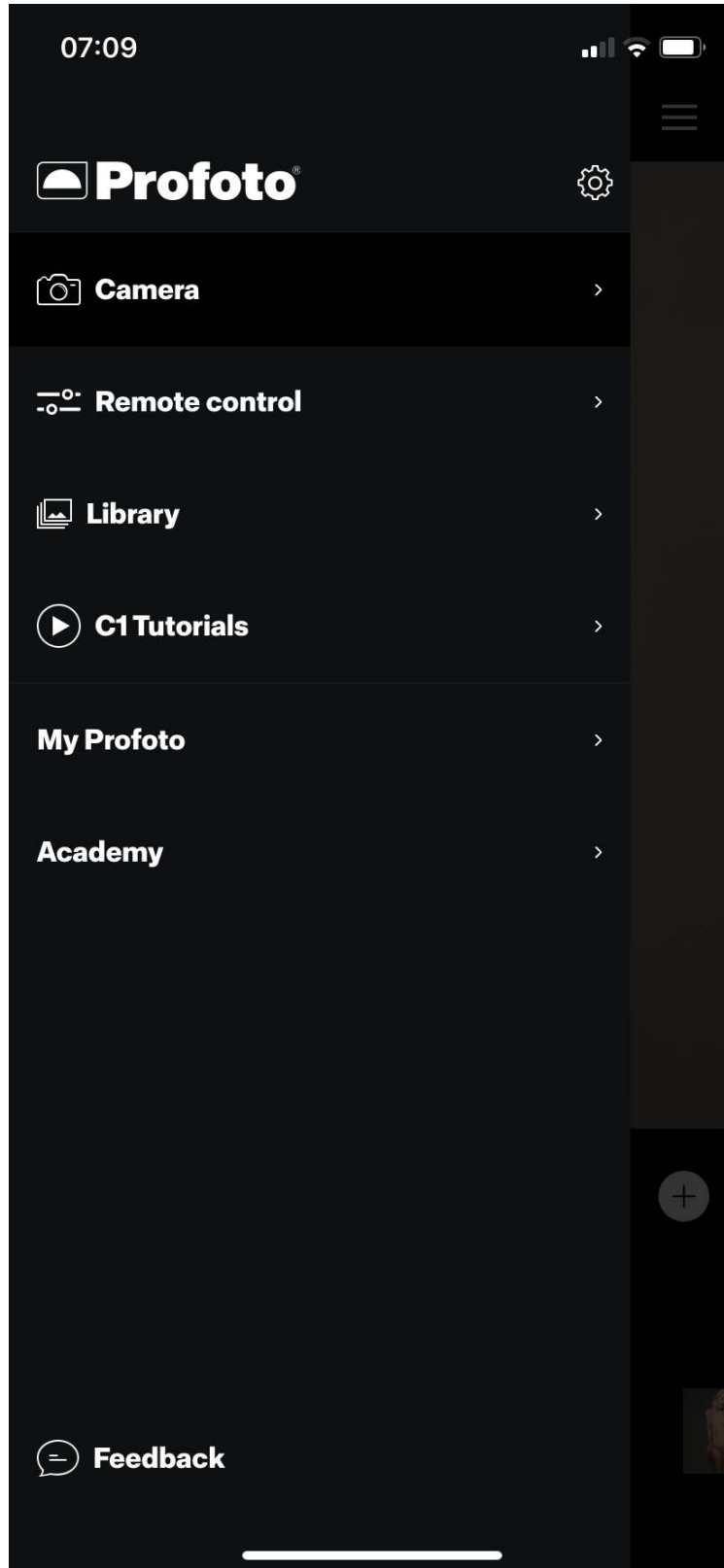
3w ago

Dear light shapers,
We're back! New app version 2.3.0 is bringing you
some exciting new features: [more](#)

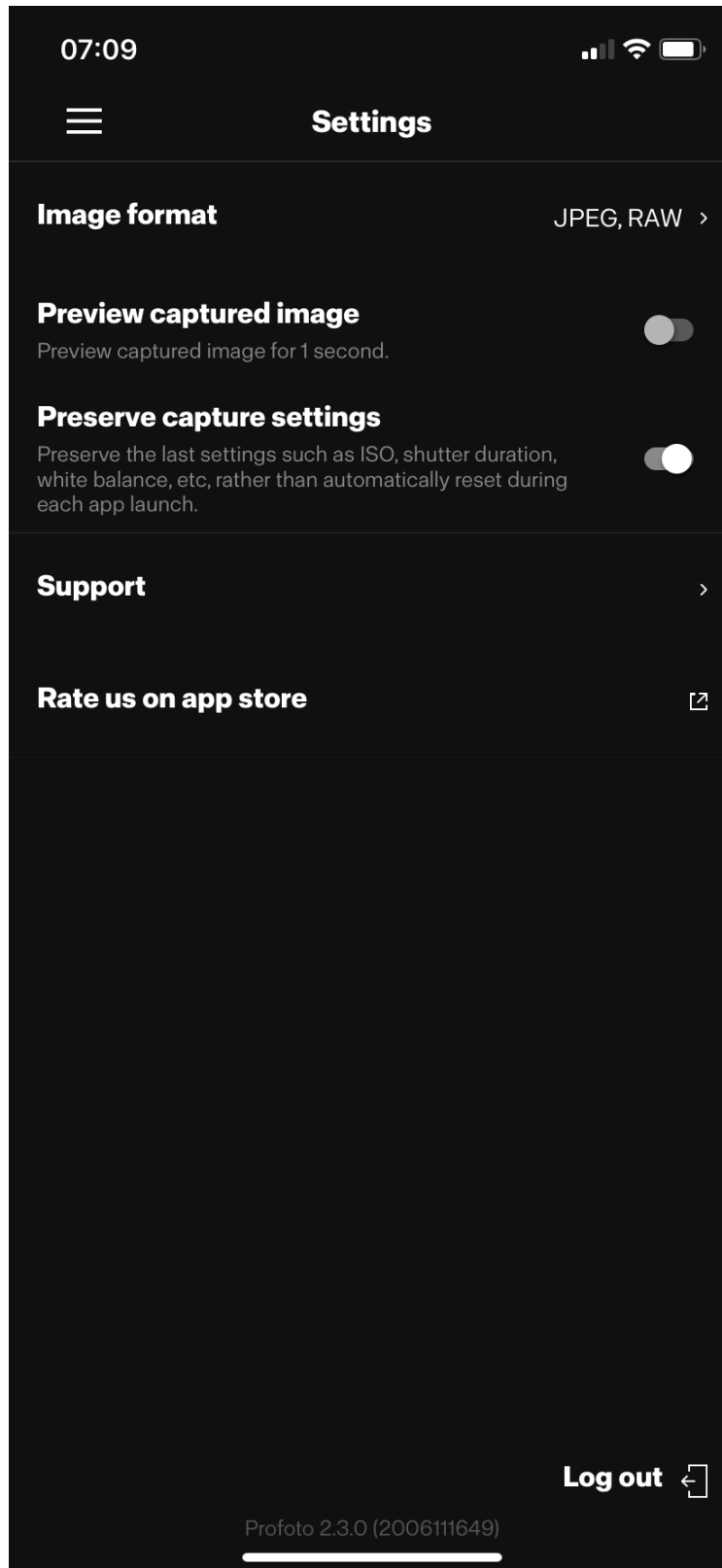
Preview



Profoto app in Apple app store



Profoto app settings – iPhone 11



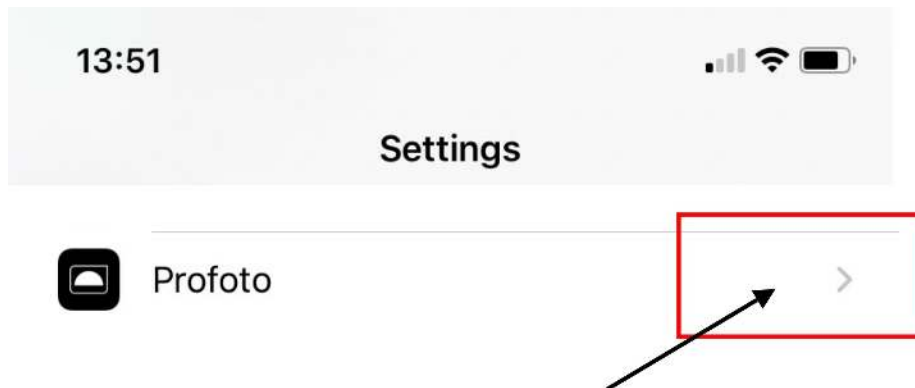
Profoto app settings – iPhone 11



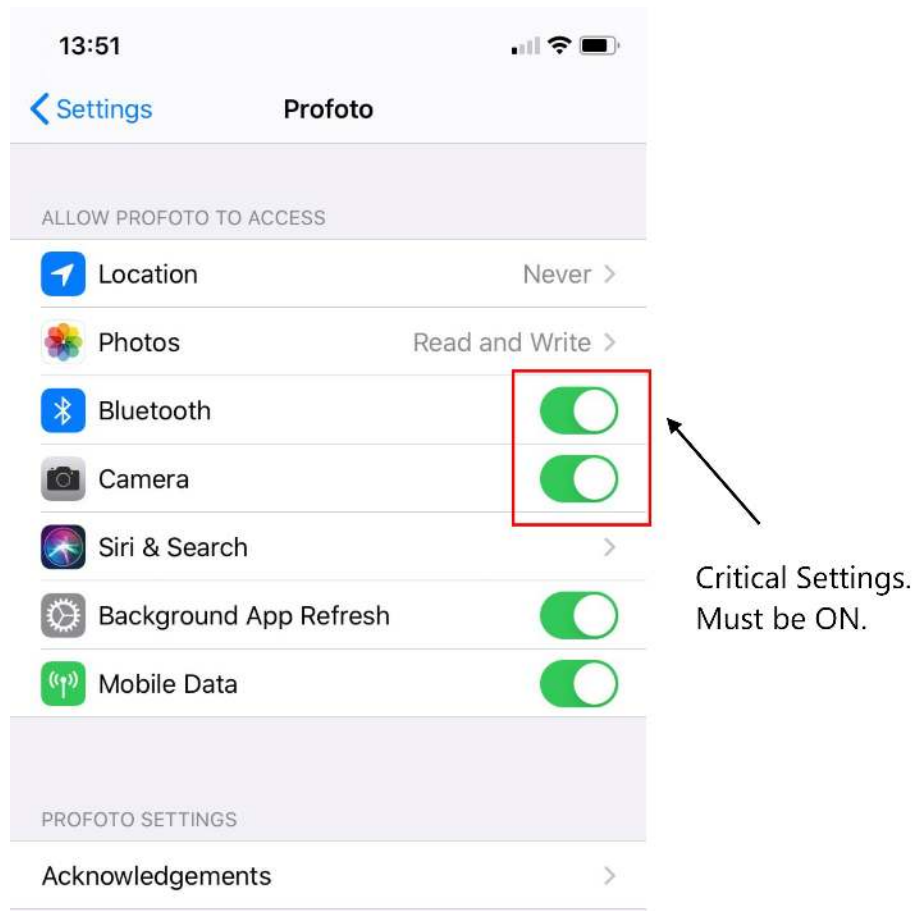
Launch Settings

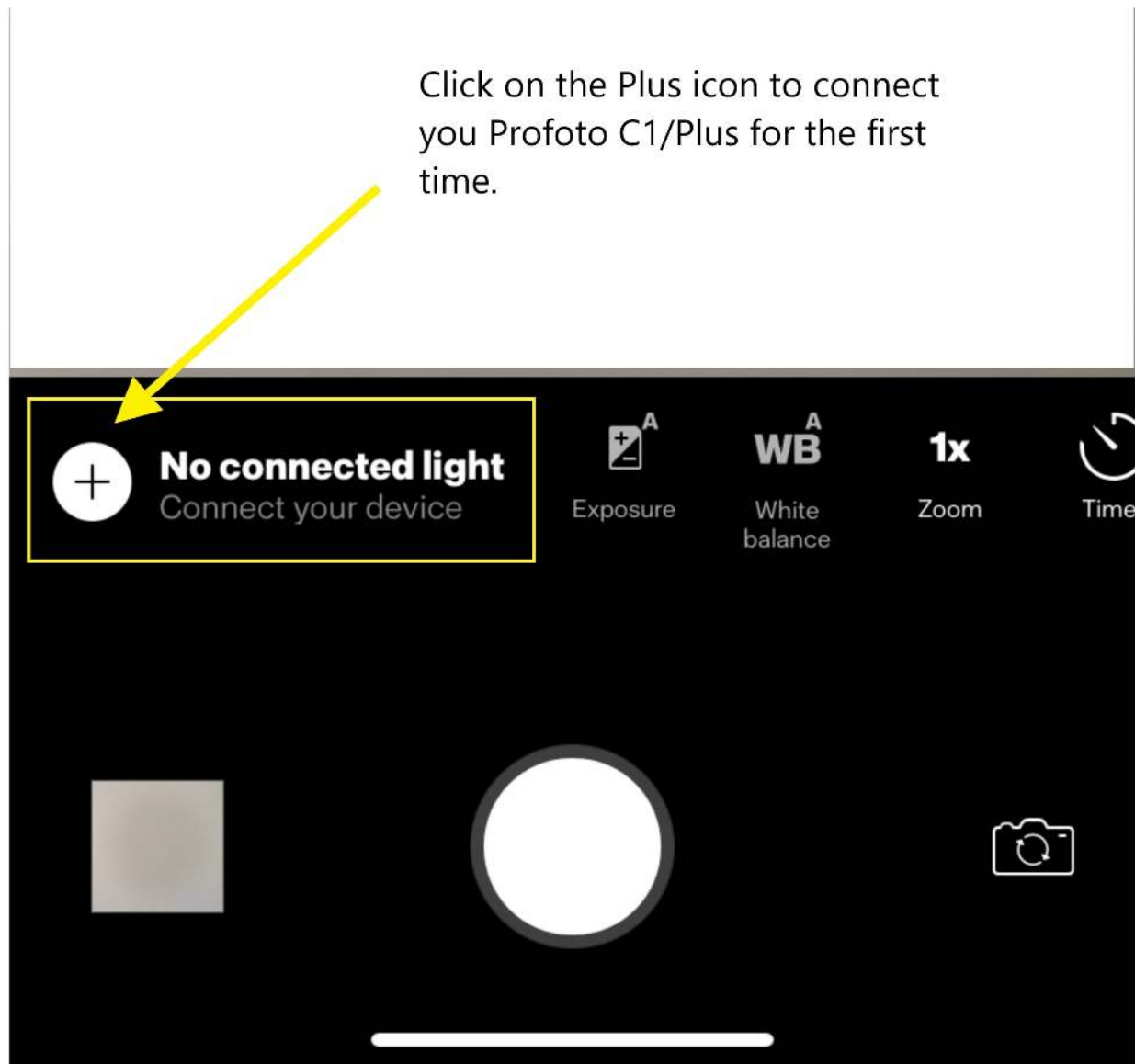
Profoto app settings – iPhone 11

Enable **Bluetooth** and **Camera roll** if you plan to use the Profoto Camera app with the C1 or C1 Plus, and store images on the iPhone camera. You can enable/disable these settings later via the app settings (iPhone Settings | Profoto | Settings).

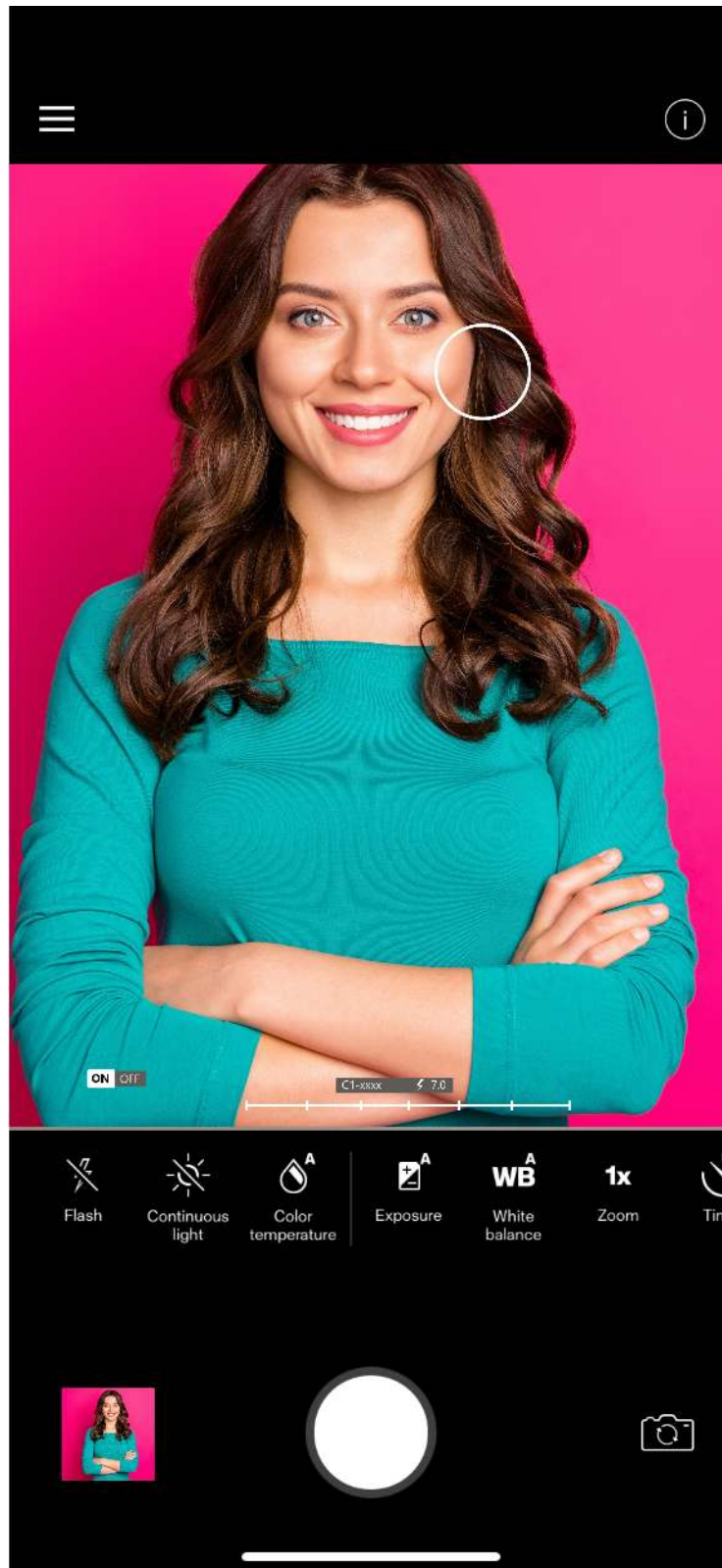


Open Profoto Camera Settings

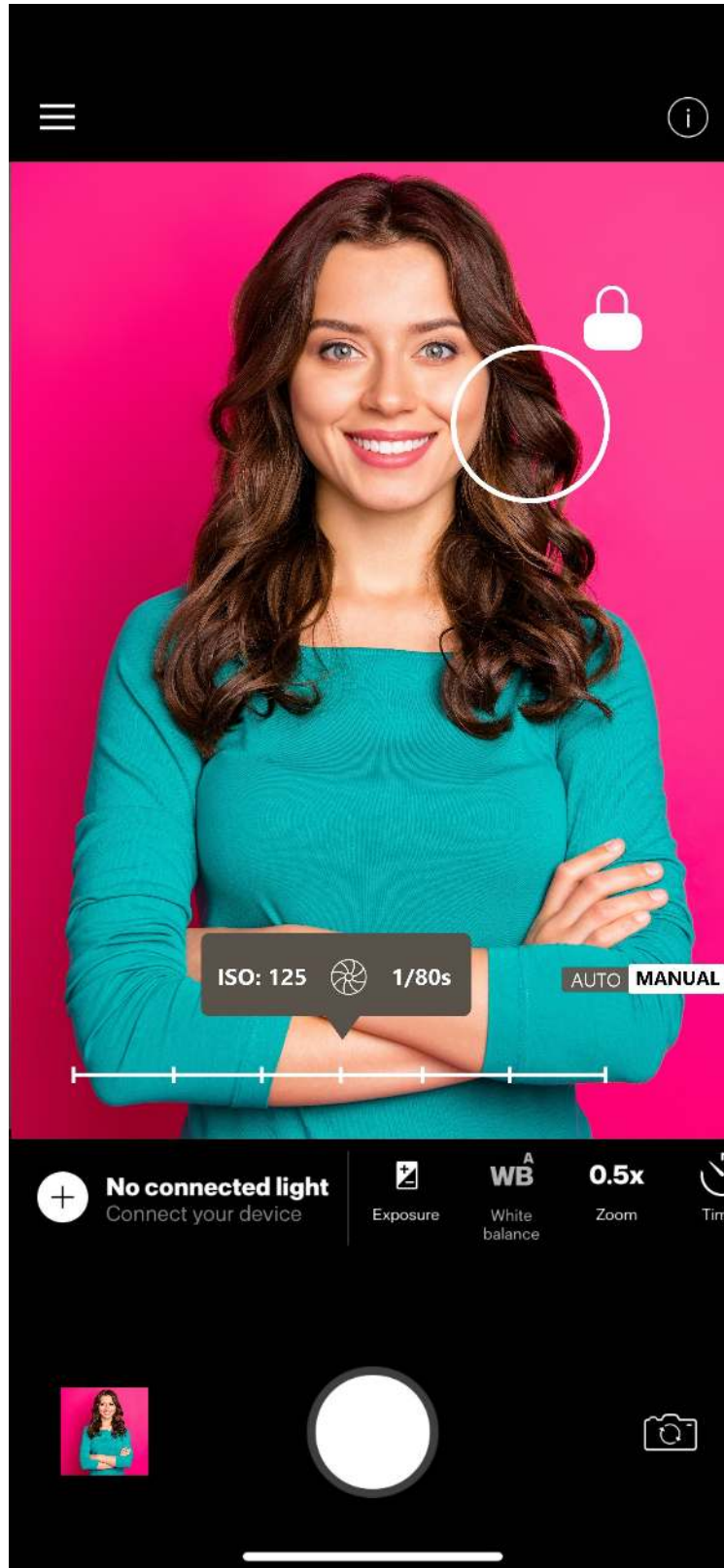




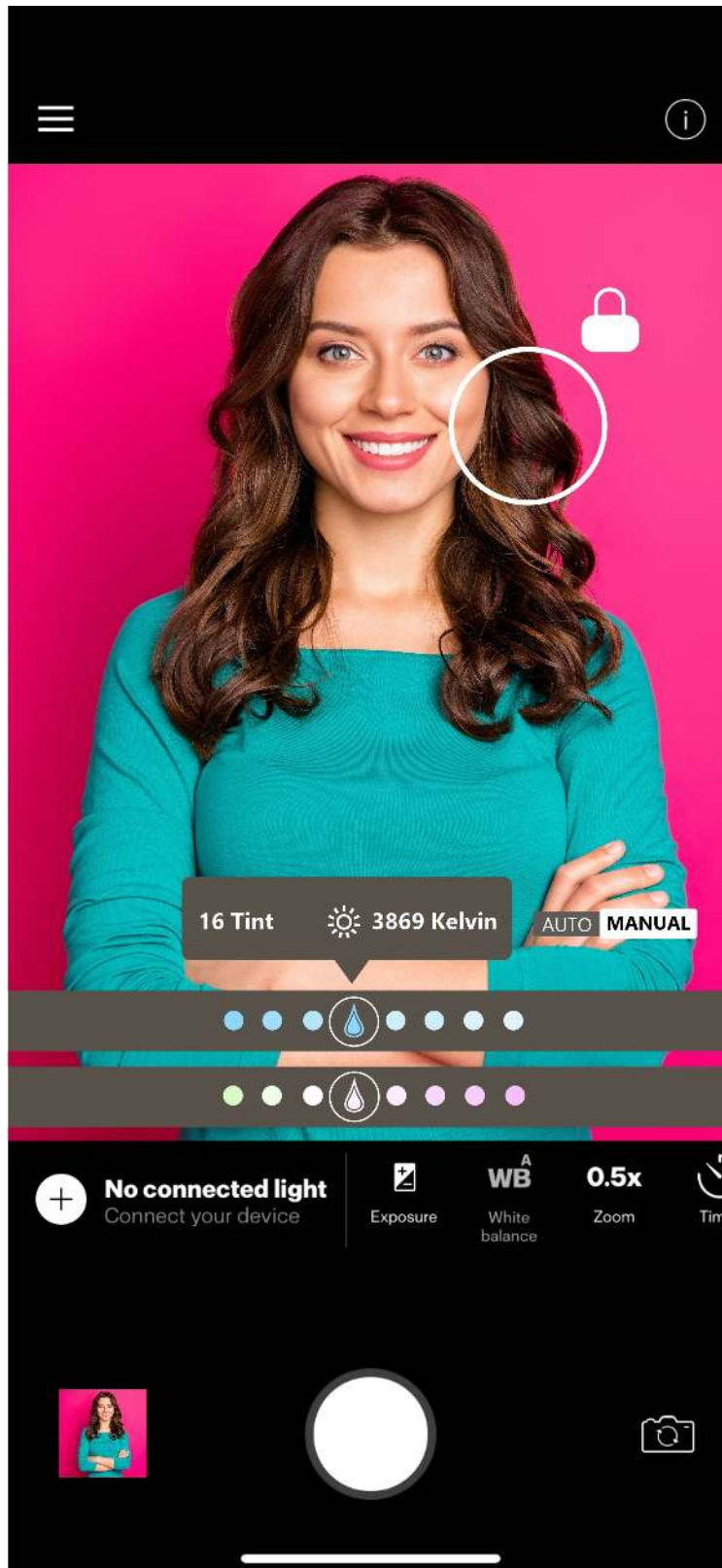
To make the first connection from the iPhone (via the Profoto camera app), ensure the appropriate settings are enabled (i.e. bluetooth, camera), and then click on the plus icon to pair your phone with a C1/C1 Plus. Once it is paired, the app remembers the device, and when you switch on a C1/C1 Plus, the Profoto camera app will automatically connect to previously paired model. You will notice the model and serial number (last four digits) of your unique device. Once connected you can select continuous light, flash, and power (1–10). **Manual** mode lets you set ISO, shutter speed, light color.



Profoto app – iPhone 11 – set Flash output.



Profoto app – iPhone 11 – you can set ISO and shutter speed.



Profoto app – iPhone 11 – – you can set color warmth and tint.



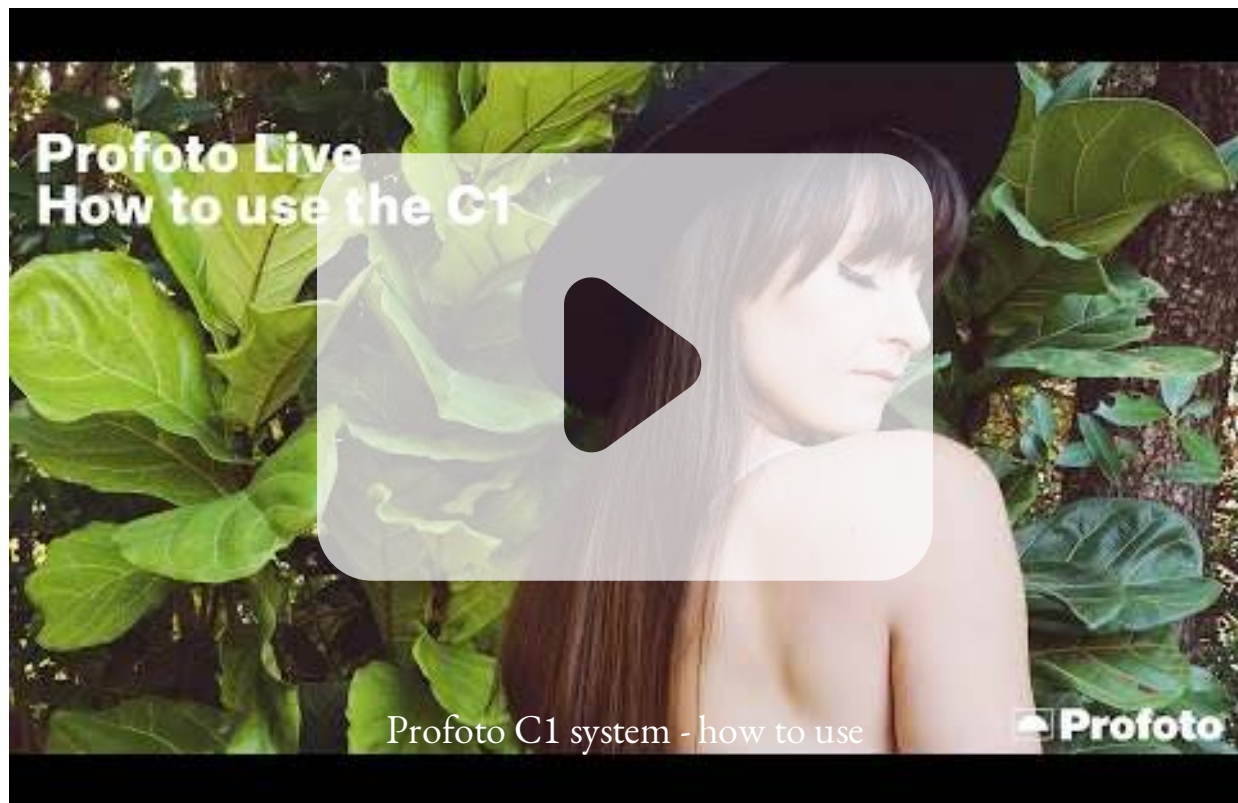
Profoto C1 Plus review from B&H Photo and Video



Profoto C1



Profoto C1 Plus





Profoto B10 system future ready - combine it with your iPhone

Profoto B10 Portrait setup Tutorial



Profoto B10 Portrait Tutorial



Profoto Connect

Profoto Connect is the button-free trigger that integrates your camera and Profoto light – making light shaping easier than ever before. It only has three settings; auto, manual and off. In auto mode, you just point and shoot for a good exposure, because the flash power is calculated for you. And in manual mode, you can fine-tune the light either manually or via the Profoto app. The Profoto app is available for iPhone and Android smartphones. Please see the full compatibility list under technical specifications. This app is required for full control of the Profoto Connect and for making firmware upgrades.

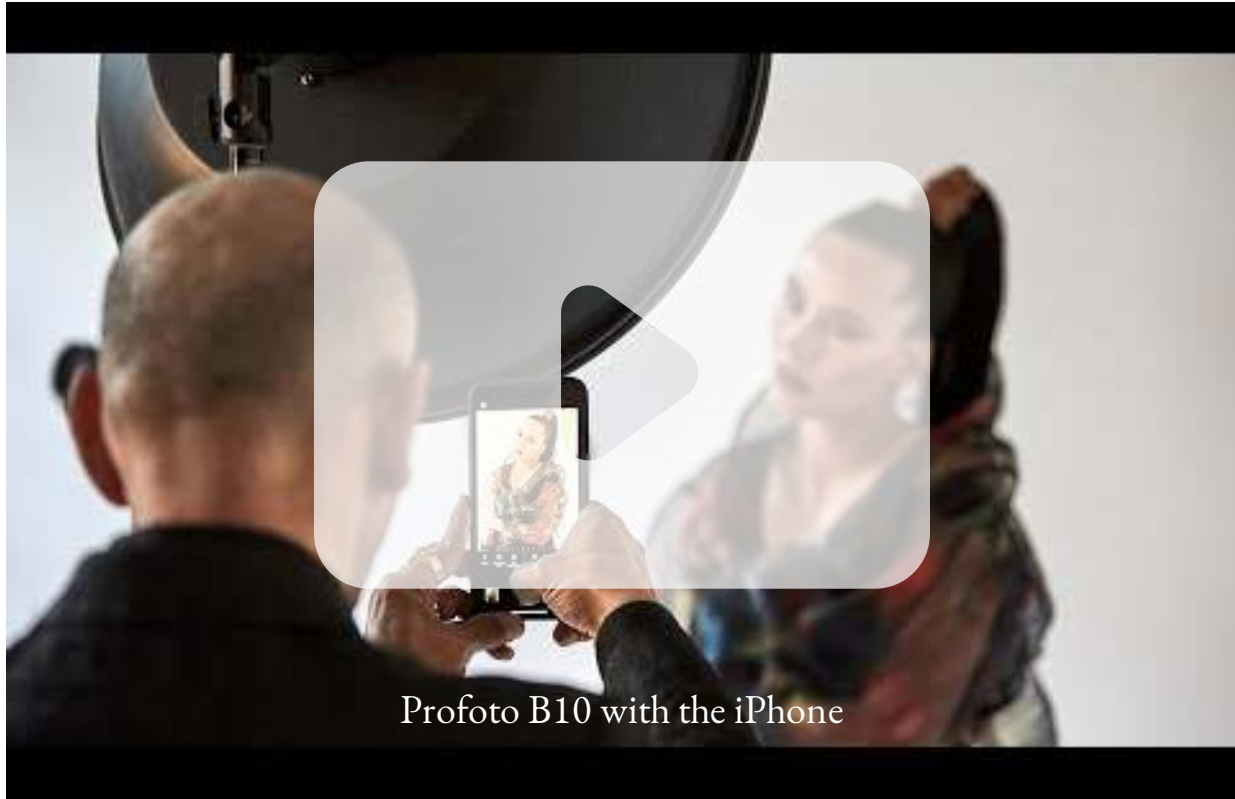
Profoto Lights system

- ### Profoto C1 The light that changes everything

Profoto C1 is a smartphone studio light that creates professional images with just a simple click. Its round design mimics the sun and fits perfectly in the palm of your hand, delivering beautiful light on the go. Play around with positioning, angles, color temperature, and power to achieve different effects – you'll find the C1 offers lots of creative possibilities.

- ### Profoto C1 Plus The light that changes everything

Profoto C1 Plus is a smartphone studio light that creates professional images with just a simple click. Its round design mimics the sun and fits perfectly in the palm of your hand, delivering beautiful light on the go. Compatible with light shaping tools such as color gels and grids, it gives you limitless creative possibilities.



- ## Profoto B10 & B10 Plus Big lights in small packages

Choose the Profoto B10, and you'll get five times the power of a speedlight, select the B10 Plus, and you'll get twice that power. Since both are no bigger than a large camera lens, whichever you go for you'll be getting a big light in a small package.

- ## Profoto Connect The button-free trigger

Profoto Connect is the button-free trigger that integrates your camera and Profoto light – making light shaping easier than ever before. It only has three settings; auto, manual and off. In auto mode, you just point and shoot for a good exposure, because the flash power is calculated for you. And in manual mode, you can fine-tune the light either manually or via the Profoto app. The Profoto app is available for iPhone and Android smartphones. Please see the full compatibility list under technical specifications. This app is required for full control of the Profoto Connect and for making firmware upgrades.

Profoto Connect is available for Canon, Sony, Nikon, Fujifilm and Olympus/Panasonic.



System requirements for Profoto Camera app

Operating systems

iPhone 7 or later, running on iOS 11 or later.

Android smartphones running on Android OS 7 or later.

At this moment, Android smartphones can only control the light settings with the remote control function, and cannot be used to capture images directly in phone.

Supported products

Profoto C1

Profoto C1 Plus

Profoto B10

Profoto B10 Plus

Profoto A10

Profoto Connect

Sample Images

The sample images included in this review were taken indoors. The studio setup includes a light gray background roll-down. I typically have two lights on opposing side of the subject.



The left side is either a model light (continuous light), or also a flash light. The right side is typically my flash light. I also often use a diffused light overhead of the subject, not at too much power, just a little for hair separation.

Depending on the images I am trying to create, I may also place one or two hair-lights behind the model for background lighting or model separation.

In this situation, I placed a model light on the left side, and used the C1 on the right side. Unfortunately the C1 has no tripod thread, so you have to hold it in your hand, or place it on a stable flat surface, or improvise with some duct tape or some special clamps. If you need a tripod mount to keep your hands free and have the Profoto sit on its own, then you need the C1 Plus, which has a tripod thread, and makes positioning easier. You could also use a Profoto A10 or Profoto B10/Plus. I also used a gentle hair light above the subject with a grid to direct the diffused light.



I initially took photos with the iPhone native lens (on an iPhone 11), using the wide lens (x1). For portraits I think that lens is not really pleasing, as it distorts the face. I did not use the C1 at this point.

Later I then used a lens accessory for the iPhone – a 58mm lens from Moment. The lens requires a special phone case (I used the Nomad case compatible with Moment lenses) as the case includes a mount for the lens.

You can then align the lens notches with the mount and twist the lens into place. I also used the C1 flash with this setup. Personally I found the results much more pleasing – the 58mm lens range helped a lot, and the lighting was pleasant and soft with the C1 from the right side.

With system cameras and flash systems setup, I use a light meter to set my exposure. I often select ISO 100, 1/125s shutter speed, and F8. With the iPhone you can not alter the aperture. With the Profoto app you can select the ISO and shutter speed.

I started taking pictures with AUTO mode, but this led to high ISO values being selected, and the results were grainy images (more an issue of the sensor size, than app or lens). Later I set the Profoto camera app to **MANUAL** mode and tried to get close to ISO 100. Samples images at the beginning have an ISO of 1000 or slightly above, whereas the samples thereafter (with the Moment 58mm lens and C1 flash) generally have an ISO of around 320.

I set Profoto camera app to capture RAW images (Adobe DNG). I did some editing in Adobe Lightroom.



Sample images taken with iPhone 11. Native wide lens and camera app.
RAW image format (Adobe DNG).
Studio model light also in use
Editing in Adobe Lightroom



Taken with iPhone 11. Native wide lens. Profoto Camera app.
RAW image format (Adobe DNG).
Studio model light also in use

Editing in Adobe Lightroom



Taken with iPhone 11. Moment 58mm lens. Moment Camera app.
Studio model light (left side). Profoto C1 continuous light (right side)

RAW image format (Adobe DNG).
Editing in Adobe Lightroom



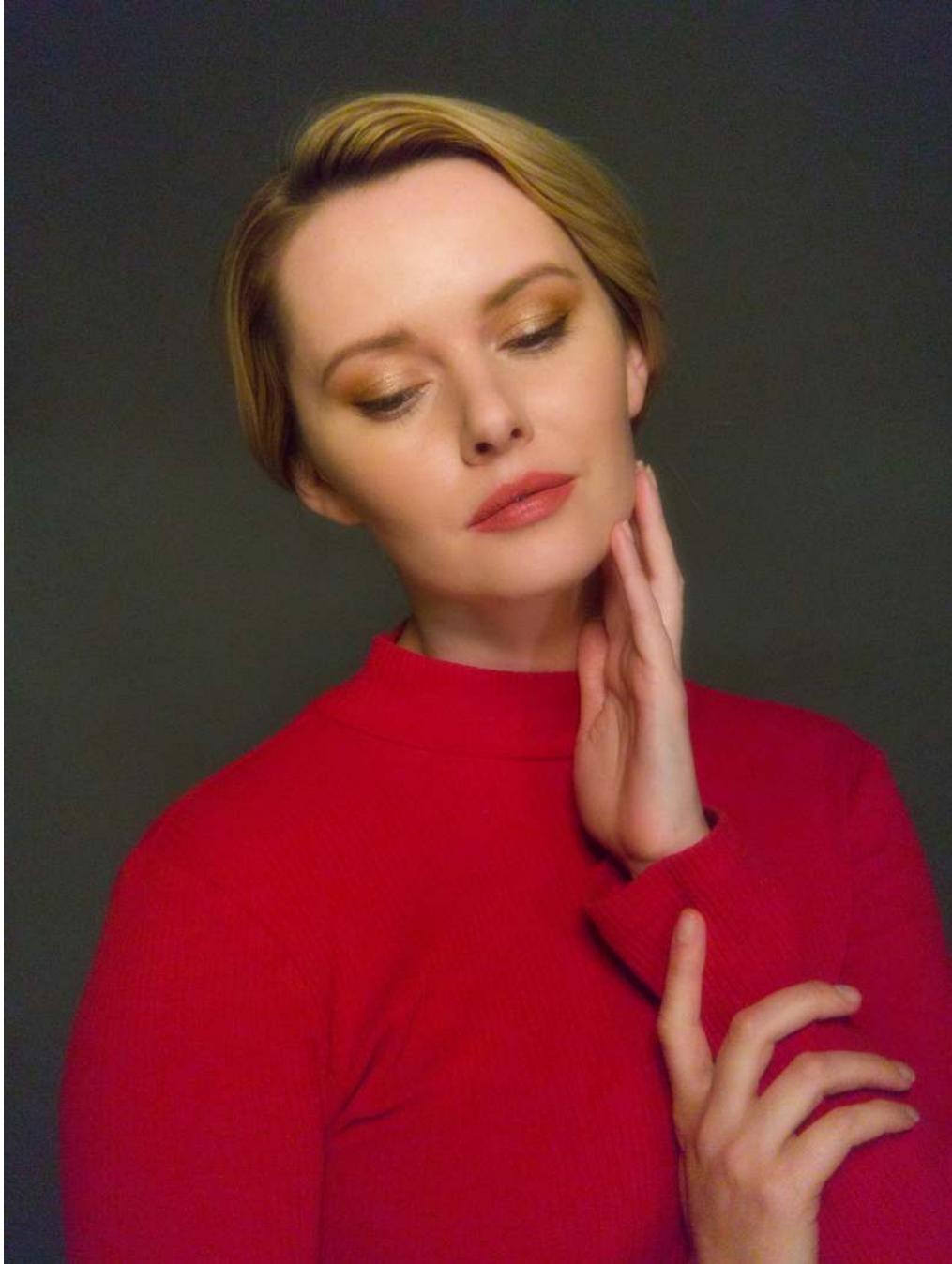
Taken with iPhone 11. Moment 58mm lens. Profoto Camera app.
Profoto C1 flash (right side).
Studio light also in use (left side)

RAW image format (Adobe DNG).
Editing in Adobe Lightroom



Taken with iPhone 11. Moment 58mm lens. Profoto Camera app.
Profoto C1 flash (right side).
Studio light also in use (left side)

RAW image format (Adobe DNG).
Editing in Adobe Lightroom



Taken with iPhone 11. Moment 58mm lens. Profoto Camera app.
Profoto C1 flash (right side).
Studio light also in use (left side)

RAW image format (Adobe DNG).
Editing in Adobe Lightroom



Taken with iPhone 11. Moment 58mm lens. Profoto Camera app.
Profoto C1 flash (right side).
Studio light also in use (left side)

RAW image format (Adobe DNG).
Editing in Adobe Lightroom



Taken with iPhone 11. Moment 58mm lens. Profoto Camera app.
Profoto C1 flash (right side).
Studio light also in use (left side)

RAW image format (Adobe DNG).
Editing in Adobe Lightroom



Taken with iPhone 11. Moment 58mm lens. Profoto Camera app.
Profoto C1 flash (right side).
Studio light also in use (left side)

RAW image format (Adobe DNG).
Editing in Adobe Lightroom



Taken with iPhone 11. Moment 58mm lens. Profoto Camera app.
Profoto C1 flash (right side).
Studio light also in use (left side)

RAW image format (Adobe DNG).
Editing in Adobe Lightroom



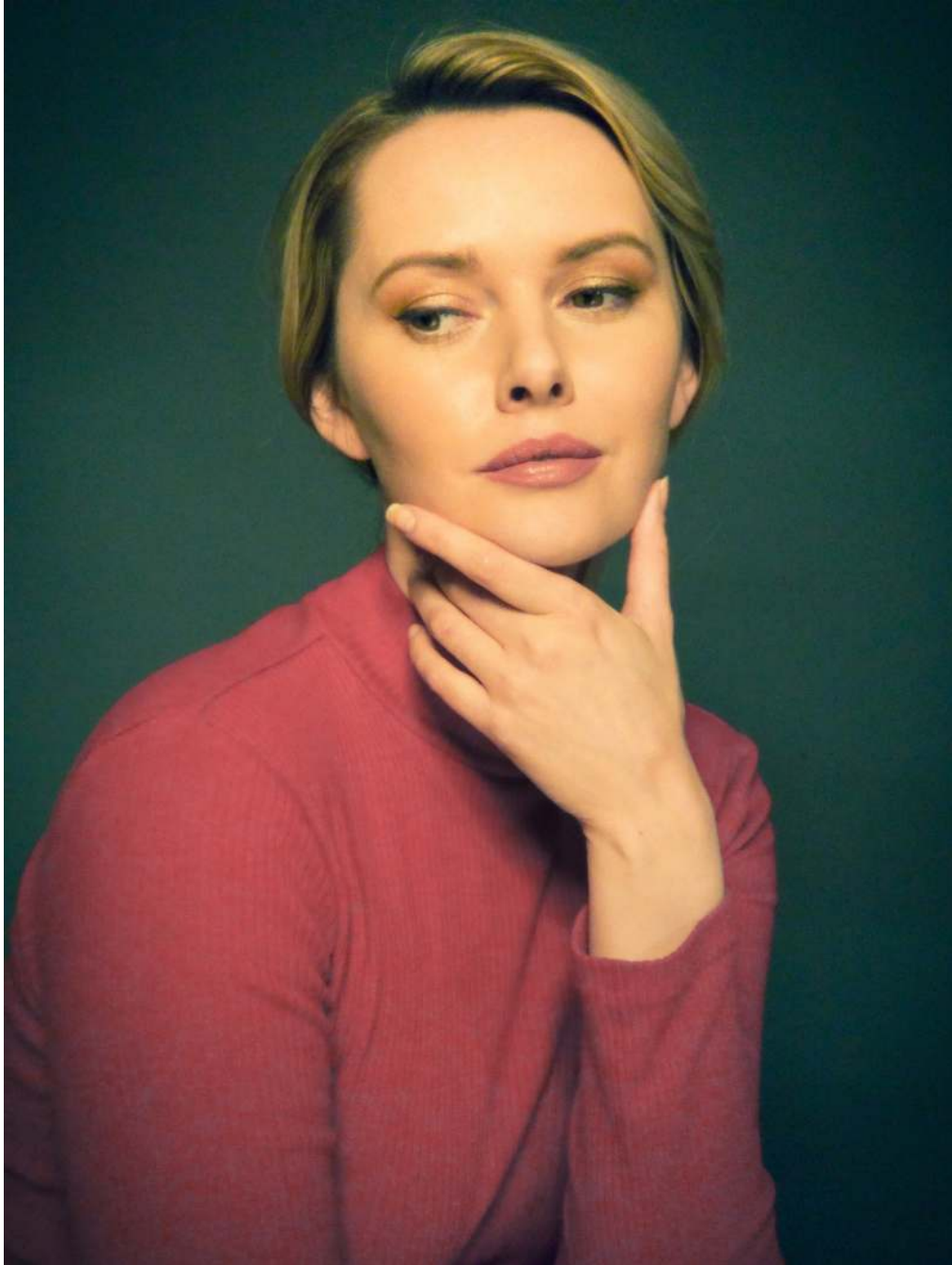
Taken with iPhone 11. Moment 58mm lens. Profoto Camera app.
Profoto C1 flash (right side).
Studio light also in use (left side)

RAW image format (Adobe DNG).
Editing in Adobe Lightroom



Taken with iPhone 11. Moment 58mm lens. Profoto Camera app.
Profoto C1 flash (right side).
Studio light also in use (left side)

RAW image format (Adobe DNG).
Editing in Adobe Lightroom



Taken with iPhone 11. Moment 58mm lens. Profoto Camera app.
Profoto C1 flash (right side).
Studio light also in use (left side)

RAW image format (Adobe DNG).
Editing in Adobe Lightroom



Taken with iPhone 11. Moment 58mm lens. Profoto Camera app.
Profoto C1 flash (right side).
Studio light also in use (left side)

RAW image format (Adobe DNG).
Editing in Adobe Lightroom



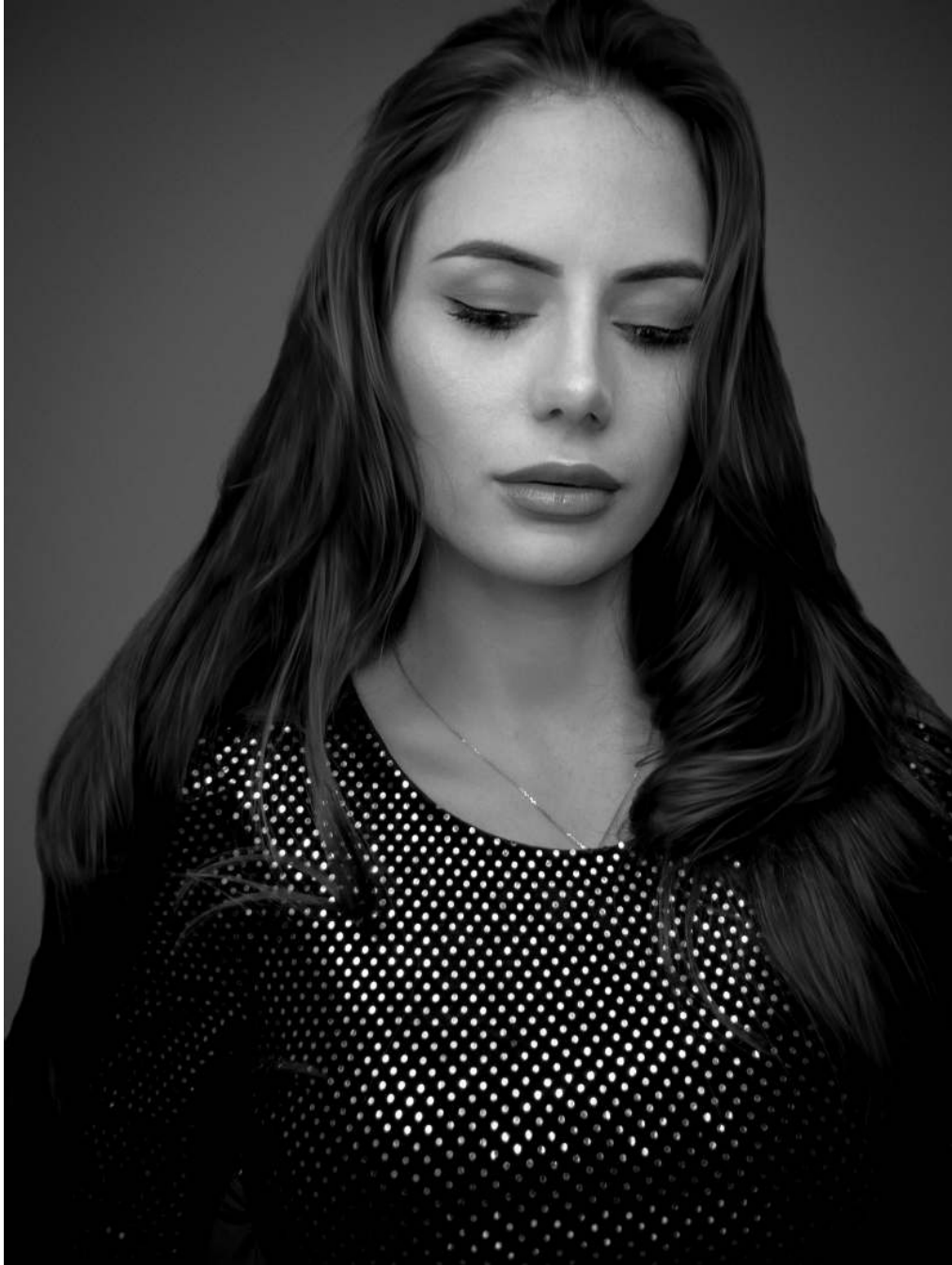
Taken with iPhone 11. Moment 58mm lens. Profoto Camera app.
Profoto C1 flash (right side).
Studio light also in use (left side)

RAW image format (Adobe DNG).
Editing in Adobe Lightroom



Taken with iPhone 11. Moment 58mm lens. Profoto Camera app.
Profoto C1 flash (right side).
Studio light also in use (left side)

RAW image format (Adobe DNG).
Editing in Adobe Lightroom



Taken with iPhone 11. Moment 58mm lens. Profoto Camera app.
Profoto C1 flash (right side).
Studio light also in use (left side)

RAW image format (Adobe DNG).
Editing in Adobe Lightroom



Taken with iPhone 11. Moment 58mm lens. Profoto Camera app.
Profoto C1 flash (right side).
Studio light also in use (left side)

RAW image format (Adobe DNG).
Editing in Adobe Lightroom



Comparison image taken with Sony A7 III. Sony RAW image.
Studio model light (left side) and Flash (right side) also in use

Editing in Adobe Lightroom

Conclusion

Overall I am pleased with the results. The C1 system is small, portable, light, and recently has become a lot more affordable. The Profoto camera app is easy to use, has face recognition, and lets you control ISO, shutter speed, as well as light color temperature. I personally think Profoto should have included a thread mount on both C1 models, as cheap continuous lights do.

The C1 Plus is the more advanced model, includes a tripod mount and some control buttons. Importantly, it also includes a Profoto air receiver. If you are a Profoto light system user already, or plan to be, then the C1 Plus could be used alongside other models, such as the Profoto B10. The C1 Plus also supports accessories, such as diffuser dome, gels, and light shaping add-ons, and all of these are easy to attach via magnets.

The true power probably comes with combining two or more lights. You can add multiple C1s together, mix C1 and C1 Plus in a group, or use C1 Plus with Profoto B10 or Profoto A10.

The C1 system comes in a small box with padding and a charging cable. A small hard-case padded travel pouch may have been nice, but that would drive costs higher. I use the original box as storage and transport.

The sample photos are a little grainy (noisy), but that is caused by the higher ISO and small sensor size of the iPhone. I suggest trying to keep the ISO between 100 and 300. Outdoors this should be less of a problem than indoors. When indoors you will probably need multiple lights.

Ultimately it will depend on your use case, smartphone and photography styles and kit. I think the Profoto C1 system is unique, leads to increased creativity, and can help in studio, wedding, product, food, or travel photography situations.

FAQs – Profoto C1 & C1 Plus

Which light shaping tools are compatible with the Profoto C1 Plus and C1?

Profoto C1 Plus is compatible with the Profoto Clic light shaping tools. It is not compatible with the Profoto Soft Bounce and the Profoto Bounce Card.

Profoto C1 has a built-in dome diffuser. It is not compatible with other light shaping tools.

Do the Profoto C1 Plus and C1 have auto power off in case I forget to turn it off?

Yes, they will shut off after 30 minutes of inactivity.

Are there any requirements on battery banks for USB-C charging?

No.

Can I use the Profoto C1 Plus or C1 while charging it?

No.

Can the Profoto C1 Plus and C1 be mounted to a light stand?

Profoto C1 Plus has a built-in standard ¼ in-20 thread which makes it easy to mount on a lightstand or arm.

Profoto C1 is primarily intended to be handheld or placed on a flat surface.

How do I know when there is new firmware available for my Profoto C1 Plus or C1? How do I update its firmware?

When there is new firmware available, an information box appears in Profoto Camera. Press the information box and follow the instructions to update your device.

The Profoto C1 Plus and C1 don't have a screen. How do I know their flash power?

When creating images with Profoto Camera, you will see the flash power of your Profoto C1 Plus or C1 directly in the camera interface. When creating images with a DSLR or mirrorless camera, you will see the flash power of your Profoto C1 Plus or C1 in the remote control/devices section of Profoto Camera. When changing flash power with the +/- buttons on the C1 Plus (not applicable for the C1), the continuous light will be used to illustrate the increasing or decreasing of flash power.

The Profoto C1 Plus and C1 don't have a screen. How do I know their remaining battery life?

The Profoto C1 Plus and C1 have a status indicator which indicates the battery level when the device is turned on and off. Green indicates that the battery is charged. Yellow indicates that the battery is low (or that the device is being charged). Red indicates that the battery is critically low.

I want more flash power from my Profoto C1 Plus or C1. What can I do?

Make sure your Profoto C1 Plus or C1 is at maximum flash power (10) and directed at your subject. If you need more power still, try to move closer to your subject. If you prioritize flash power, avoid using Clic Grids and Clic Gels, since they will reduce the flash power output.

Is there an instruction tutorial for how to create images with Profoto Camera?

Yes, visit profoto.com/support/camera to view the instruction tutorial, or view it right inside Profoto Camera.

What smartphone models and operating systems are supported on Profoto Camera?

Apple iPhone 7 or later running on iOS 11 or later (valid as per August 2019).

Can I use the Profoto C1 Plus and C1 with the native iPhone camera app?

No. For a great user experience, a deep level of integration between camera and light is necessary, which is why the Profoto C1 Plus and C1 require Profoto Camera.

How do I set focus?

If you are photographing a person, Profoto Camera will automatically set the focus to the subject's face, which is indicated by a square around the subject's face. If you want to set another focus point, or if you are photographing other subject's than a person, tap on the screen where you want to set focus. Note that in Auto, the camera will correctly expose the focus point.

Profoto Camera does not seem to find focus due to photographing in low light. What can I do?

Turn on the continuous light by pressing the sun icon. Adjust the power of the continuous light by swiping across the horizontal slider.

With Automatic exposure, the live image on the screen differs from the exposure of the final image. How come?

With Automatic exposure, the right exposure of the final image is calculated after you press the capture button, and is based on the combination of the brightness of the ambient light, the power of your Profoto C1 Plus or C1 and the distance from your Profoto light to your subject.

My Profoto C1 Plus or C1 flashes more than once per image captured. Why?

When shooting with Auto exposure, Profoto Camera analyses one or more pre-flashes from the Profoto C1 Plus or C1 in order to determine the exposure for a correctly exposed subject. If you prefer a faster workflow, you can capture the first image with Auto exposure and then switch to Manual exposure. You then keep the exposure and flash power from the image captured with Auto exposure, and the C1 Plus or C1 will only flash once per image. With Manual exposure, you can also finetune the exposure or flash power if needed.

With Auto exposure, Profoto Camera has a Natural to Dramatic slider – what does it do?

When sliding towards Dramatic, the camera exposure is decreased and the flash power increased, resulting in an image with darker ambient light (the light that does not come from your Profoto C1 Plus or C1, e.g a lamp, a window, the sky, etc.). The subject will still be correctly exposed. When sliding towards Natural, the camera exposure is increased and the flash power decreased, resulting in an image with brighter ambient light. The subject will still be correctly exposed.

How do I adjust the exposure manually?

Tap the exposure symbol and switch it to Manual. Swipe across the horizontal slider to adjust the exposure.

How do I adjust the power of my Profoto light?

Whether you are using Automatic or Manual exposure, you change the power of your Profoto light by tapping the flash icon, and then swiping across the horizontal slider.

How many Profoto C1 Plus or C1 can be connected and sync simultaneously with Profoto Camera?

Up to 3 Profoto C1 Plus/C1 (any combination).

How do I know if the Profoto C1 Plus and C1 is connected to Profoto Camera?

When Profoto Camera connects to a Profoto device, the status indicator on the device turns blue momentarily. When Profoto Camera disconnects from a Profoto device, the status indicator blinks blue. In Profoto Camera, you can see in the camera interface as well as in the remote control/device section if your device is connected.

In which format are my images saved?

In Profoto Camera's main menu, press the cogwheel and select in which format you want to save your images.

How do I know which Profoto Camera version I am using?

In the remote control/devices section, you will be able to read which Profoto Camera version you are using.

Why haven't you developed the Profoto Camera for Android?

Profoto decided to prioritize iOS for the first release. Profoto cannot comment on future support for other operating systems.

Can the Profoto C1 Plus or C1 be used with a DSLR or mirrorless camera? If yes, can it also be used with other Profoto lights?

Profoto C1 Plus can be used with DSLR and mirrorless cameras using any Profoto AirTTL Remote, i.e. Profoto Connect, Profoto Air Remote TTL, Profoto A1X and Profoto A1. It can then also be used with other Profoto lights, such as the A1X, B10 or even larger lights.

Profoto C1 is a dedicated smartphone studio light and cannot be used with Profoto AirTTL Remotes.

When using a DSLR or mirrorless camera, how many Profoto C1 Plus can I sync and remotely control simultaneously?

As many as you wish.

Can I use the Profoto C1 Plus with my DSLR or mirrorless camera at any shutter speed? In other words, is HSS supported?

Yes, you can use your DSLR or mirrorless camera at any shutter speed, and HSS is supported.

Since Profoto C1 Plus is based on LED technology instead of xenon, the flash power when using it with DSLR/mirrorless is regulated by adjusting the length of the flash. That means that the slower the shutter speed, the more flash light can hit the camera sensor, and vice versa.

Can the color temperature of the Profoto C1 Plus be adjusted when using it with a DSLR or mirrorless camera?

Yes, the color temperature of the Profoto C1 Plus can be adjusted on the device itself by either long-pressing the continuous light button while pressing +/-, or in the remote control/devices section of Profoto Camera.

What is the recycling time of the Profoto C1 Plus when shooting with a DSLR or mirrorless camera?

The recycling time at full power of Profoto C1 Plus when shooting with a DSLR or mirrorless camera is one second.

How do I control the Profoto C1 Plus when using it with a Profoto AirTTL Remote?

When using Profoto C1 Plus with a DSLR or mirrorless camera, you can change flash power, color temperature and turn continuous light on/off with the buttons on the device itself. You can do the same settings, and more, in the remote control/devices section of Profoto Camera. Depending on the Profoto AirTTL Remote you use, you might also be able to change settings from the remote.

Can I capture an image with my DSLR or mirrorless camera by pressing the white capture button on the Profoto C1 Plus?

No, that feature is only supported when the smartphone is your capturing device.

Which cameras can I use with the Profoto C1 Plus?

The camera compatibility depends on the Profoto AirTTL Remote that you use. Check the camera compatibility under the Technical specifications tab on the product page of your Profoto AirTTL Remote.

Profoto Clic FAQs

Which Profoto flashes are compatible with Profoto Clic light shaping tools?

Profoto C1 Plus, Profoto A1X and Profoto A1.

Are the magnets of the Profoto Clic light shaping tools stronger than magnets on light shaping tools launched earlier for the Profoto A1X/A1?

Yes. We received customer feedback that light shaping tools risked being knocked off the flash in some situations, which is why we made this improvement.

What is the difference between using Profoto C1 Plus with and without Clic Dome?

In order to get the most uniform light pattern and color mixing, as well as the most natural shadows, it is recommended to always use Clic Dome. The difference in maximum flash power output between using the Clic Dome and not using it is negligible in most cases.

When I use Profoto C1 Plus with a Clic Gel or Clic Grid, shall I use the Clic Dome on top?

Yes, in order to get the most uniform light pattern and color mixing, as well as the most natural shadows, it is recommended to always use Clic Dome on top.

Can Profoto Clic light shaping tools be stacked?

Yes, you can use Clic Dome with a Clic Gel and/or Clic Grid. You can even use two gels together in order to create a third color.

Can I change color temperature on my Profoto C1 Plus while using a Clic Gel?

Yes, by changing color temperature while using a Clic Gel you will alter the color of the light. Use a creative gel and change color temperature to achieve a wide range of creative colors. Use a warm gel and turn the C1 color temperature to warm to make the light even warmer than it would be without the gel (or vice versa for cooler light).

Using Profoto C1 and C1 Plus with Huawei phones

Which Huawei phones support C1 and C1 Plus?

Mate30-series and P40-series. C1 and C1 Plus are supported within the native Huawei camera app and also with Profoto Camera app for Huawei.

How can I use C1 or C1 Plus with native Huawei camera app?

Connect and pair C1 or C1 Plus using the standard Huawei OS Bluetooth menu. "Profoto" shall now appear next to the flash symbol within the native Huawei camera app.

How can I use C1 or C1 Plus with Profoto Camera app for Huawei?

Search for "Profoto Camera" within the Huawei AppGallery. After you installed it, open the app and connect the C1 or C1 Plus by pressing the "+" button in the top left corner of the screen.

What is the difference between using C1 or C1 Plus in native Huawei Camera app vs. Profoto Camera app for Huawei?

Native Huawei Camera app gives you basic control over the flash and camera, and is the best solution when you need to create photos as fast as possible.

Profoto Camera app allows you full control over flash power, color, camera settings, etc.

Can I use more than one C1 or C1 Plus unit with my Huawei phone?

Native Huawei Camera app right now only supports one flash unit at a time. Yes, Profoto Camera app supports multiple flash units simultaneously.

FAQs – Profoto Camera app

Which Profoto devices can be used to create images with Profoto Camera?

All compatible lights can be used to create images with Profoto Camera, i.e. Profoto C1, Profoto C1 Plus, Profoto B10 and Profoto B10 Plus.

Can Profoto Connect be used to create images with Profoto Camera?

No, Profoto Camera cannot be used to create images with Profoto Connect. Profoto Camera can however be used to remotely control and update Profoto Connect.

All compatible lights can be used to create images with Profoto Camera, i.e. Profoto C1, Profoto C1 Plus, Profoto B10 and Profoto B10 Plus.

How many Profoto lights can be connected and flash simultaneously to create images with Profoto Camera?

Up to three (3) lights can be connected and used simultaneously via BLE connection to create images with Profoto Camera.

Is there an instruction tutorial for how to create images with Profoto Camera?

Yes, visit <https://profoto.com/support/app> to view the instruction tutorial, or view it right inside Profoto Camera.

How do I set focus?

If you are photographing a person, Profoto Camera will automatically set the focus to the subject's face, which is indicated by a square around the subject's face. If you want to set another focus point, or if you are photographing other subjects than a person, tap on the screen where you want to set focus. Note that in Auto, the camera will correctly expose the focus point.

Profoto Camera does not seem to find focus due to photographing in low light. What can I do?

Turn on the continuous light by pressing the sun icon. Adjust the power of the continuous light by swiping across the horizontal slider.

With Automatic exposure, the live image on the screen differs from the exposure of the final image. How come?

With Automatic exposure, the right exposure of the final image is calculated after you press the capture button, and is based on the combination of the brightness of the ambient light, the power of your Profoto light and the distance from your Profoto light to your subject.

My Profoto light flashes more than once per image captured. Why?

When shooting with Auto exposure, Profoto Camera analyses one or more pre-flashes from the Profoto light in order to determine the exposure for a correctly exposed subject. If you prefer a faster workflow, you can capture the first image with Auto exposure and then switch to Manual exposure. You then keep the exposure and flash power from the image captured with Auto exposure, and the Profoto light will only flash once per image. With Manual exposure, you can also finetune the exposure or flash power if needed.

With Auto exposure, Profoto Camera has a Natural to Dramatic slider – what does it do?

When sliding towards Dramatic, the camera exposure is decreased and the flash power increased, resulting in an image with darker ambient light (the light that does not come from your Profoto light, e.g a lamp, a window, the sky, etc.). The subject will still be correctly exposed. When sliding towards Natural, the camera exposure is increased and the flash power decreased, resulting in an image with brighter ambient light. The subject will still be correctly exposed.

How do I adjust the exposure manually?

Tap the exposure symbol and switch it to Manual. Swipe across the horizontal sliders to adjust ISO and exposure time.

How do I adjust the power of my Profoto light?

Whether you are using Automatic or Manual exposure, you change the power of your Profoto light by tapping the flash icon, and then swiping across the horizontal slider.

If I have Portrait mode on my iPhone, will I have it also in Profoto Camera?

Portrait mode is currently not supported in the Profoto Camera.

In which format are my images saved?

In Profoto Camera's main menu, press the cogwheel and select in which format you want to save your images.

Why can I use my B10 or B10 Plus only in Manual mode (Auto mode is not working)?

Auto mode is planned to come sometime in the future. We decided to keep improving it a little bit more, so it works up to Profoto standards.

I changed settings in Remote Control, but the changes will not turn up in the Camera. Why?

The Remote Control functionality lets you remotely control your Profoto device when creating images with a DSLR or mirrorless camera. If you are creating images with Profoto Camera, change the settings directly inside the Camera.

Which products can I remotely control from Profoto Camera when creating images with a DSLR or mirrorless camera?

You can remotely control the Profoto C1 Plus, Profoto B10, Profoto B10 Plus and Profoto Connect.

How many Profoto devices can I remotely control from Profoto Camera?

You can remotely control up to three (3) Profoto devices individually. If you remotely control a Profoto Connect, you can control however many lights that are set to the same channel as your Profoto Connect.

I'm using Profoto Connect together with my Profoto A1X, but I can't see the A1X in Profoto Camera?

In Profoto Camera, you will only see Profoto devices with Bluetooth connectivity, which Profoto A1X does not have. If your Profoto Connect and Profoto A1X are set to the same channel, you can still control your Profoto A1X from Profoto Camera by remotely controlling your Profoto Connect.

How do I activate and adjust the continuous light on my Profoto device?

Tap the sun icon to activate the continuous light. Settings to adjust its power and color temperature will then pop up. Press the sun icon again to deactivate it.

How do I set my Profoto device to standby mode?

Activate or deactivate your light by tapping the switch at the top left of the settings card. This switch will set your device into standby.

Which Profoto products can I update from Profoto Camera?

Using Profoto Camera, you can update the firmware of Profoto C1, Profoto C1 Plus, Profoto B10, Profoto B10 Plus and Profoto Connect.

How do I check if I need to update my device?

You will see an "Update" button in the Remote Control section for your device. Tap and follow the in-app instructions.

How do I check which firmware version my device is running on?

In the Remote Control section for your device, press the cogwheel, then Advanced, to see the firmware version your device is running on.

How do I update Profoto Camera?

New versions of Profoto Camera will be available in the App Store. In the App Store, under the tab "Updates", tap to see the latest available version of Profoto Camera ("Profoto"). We will continuously release updated versions to ensure the best possible user experience.

How do I know which Profoto Camera version I am using?

In the remote control/devices section, you will be able to read which Profoto Camera version you are using.

How do I connect Profoto Camera to my Profoto device?

Download Profoto Camera ("Profoto") from App Store. Activate Bluetooth on your phone, then turn on your Profoto device. Now, in Profoto Camera, tap the plus sign in Camera view or in Remote Control view, and your Profoto device will show up.

I can't connect Profoto Camera to my Profoto device. What's wrong?

Make sure Bluetooth is activated on your phone, and that your Profoto device is turned on. Now, in Profoto Camera, tap the plus sign in Camera view or in Remote Control view, and your Profoto device will show up.

If your Profoto device is a Profoto B10, check that Bluetooth is activated on your B10 (this is automatic on other Profoto devices compatible with Profoto Camera). Find the Bluetooth setting in the B10 menu, and select ON. When activated, you will see the Bluetooth icon at the bottom of the main screen on the B10 display.

How do I know if my Profoto device is connected to Profoto Camera?

When Profoto Camera connects to a Profoto device, the status indicator on the device turns blue momentarily. When Profoto Camera disconnects from a Profoto device, the status indicator blinks blue. In Profoto Camera, you can see in the camera interface as well as in the remote control/device section if your device is connected.

How do I disconnect my Profoto device from Profoto Camera?

Access "Remote control" from Profoto Camera's main menu. Choose your device and tap the cogwheel icon. Choose "Disconnect" at the bottom of the settings for your device.

With which smartphones and operating systems can I use Profoto Camera?

Profoto Camera is compatible with Apple iPhone 7 or later running on iOS 11 or later (valid as per May 2020).

With which Profoto products can I use Profoto Camera?

Profoto Camera is compatible with Profoto C1, Profoto C1 Plus, Profoto B10, Profoto B10 Plus and Profoto Connect*

*Note that you cannot create images with Profoto Camera and Profoto Connect – for that, you need any of the above listed lights.

Is Profoto planning to release an app for Android?

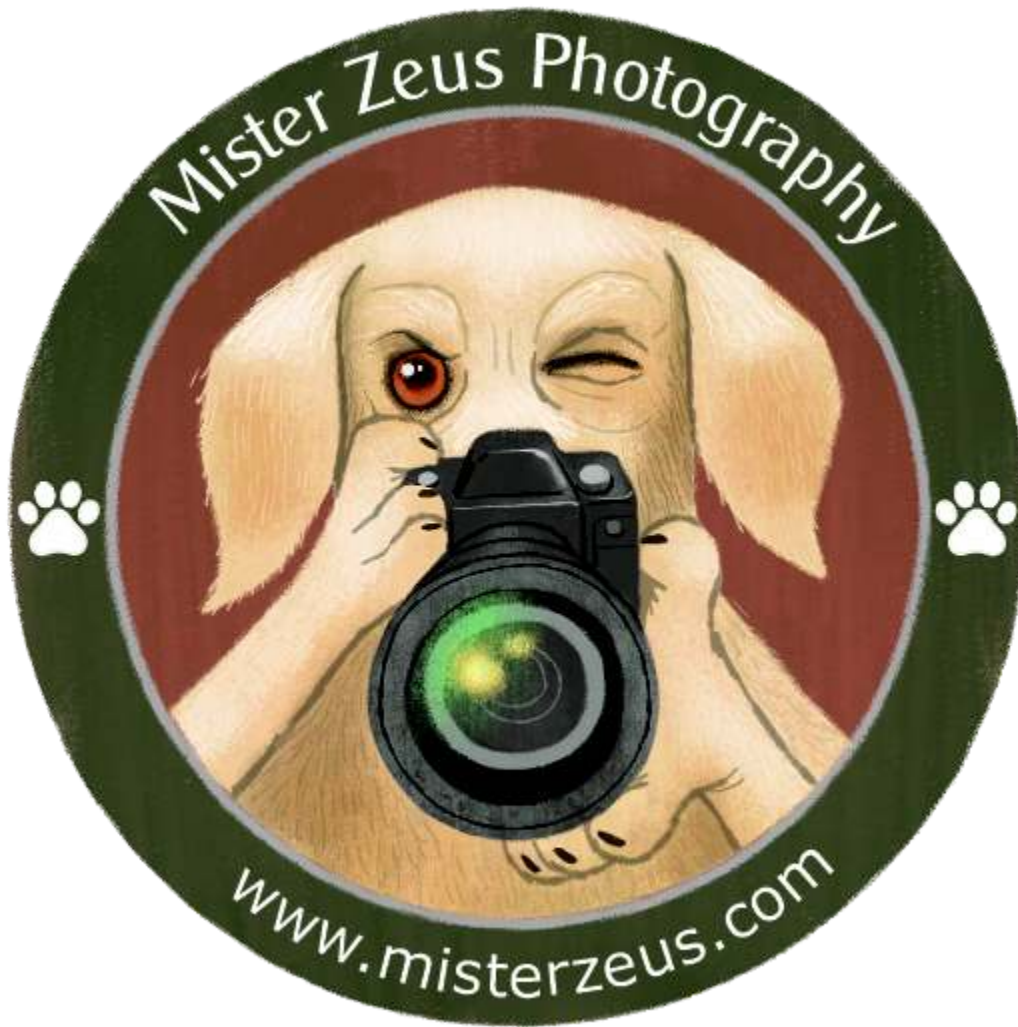
Profoto released an Android Control app which can be used to remotely control and update firmware on the Profoto B10, Profoto B10 Plus, Profoto C1, Profoto C1 Plus and Profoto Connect.

Why haven't you developed the Profoto Camera for Android?

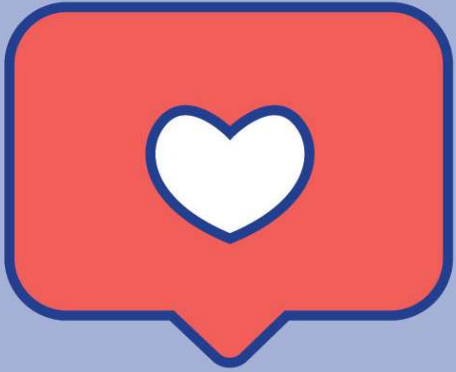
Profoto Camera for Android is in the making, and will be released sometime in the future.

Can I connect Profoto Camera to multiple Profoto devices?

Yes, you can connect up to three (3) Profoto devices simultaneously. Please note that if you have another active Bluetooth connection between your phone and a Bluetooth accessory, such as a watch or headphones, it may take about 15 seconds before you can start creating images with Profoto Camera.



For more tips on photography and other photography product reviews, visit www.misterzeus.com



Inspiring image creators everywhere

Profoto doesn't do complicated. Their photography lighting products are quick and easy to set up and use. That's probably why anyone from aspiring photographers to the world's best image creators love and endorse them. Profoto products can help produce breathtakingly stunning pictures, and they like to share inspiring stories and pass on knowledge through their Profoto Academy online photography lighting courses. Visit www.profoto.com for more information.